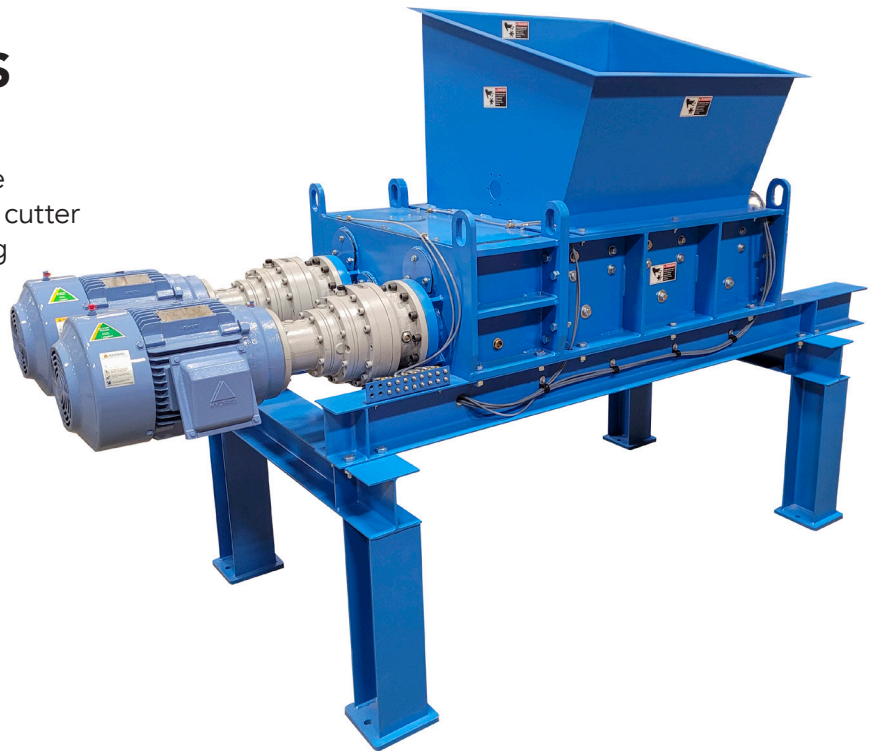


QUAD SHAFT SHREDDERS

QUAD SHAFT SHREDDERS

Quad Shaft Shredders or Four-Shaft Shredders are ideal for hard to shred materials that require separation and uniform particle size. The Amos cutter design processes products efficiently improving material liberation for downstream processing and sortation.

- C&D waste
- E-scrap
- Fiberglass Pre-Shredding
- Medical Waste
- Metal
- Municipal Solid Waste
- Plastics
- Product Destruction
- Secure Destruction



FEATURES & BENEFITS

Low speed, high torque design will handle tough to shred and bulky materials with ease.

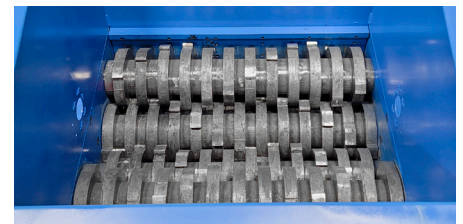
Contoured screen ensure uniform particle size

Lower heat and dust generation than high speed shredders

Self-Cleaning Chamber and screen design

Removable screens designed per the application ranging from ½" to 6"

Liberates materials for more effective downstream separation



Shredder Chamber

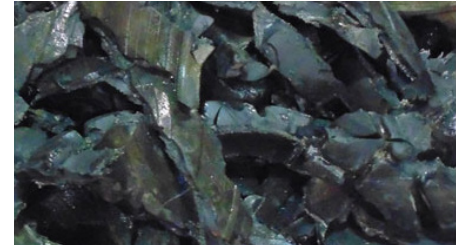


Shredder Screen

QUAD SHAFT SHREDDERS

GENERAL SPECIFICATIONS BY MODEL

| Model | QS-30 | QS-100 | QS-250 |
|--------------------------|-----------|-----------------|-----------------|
| Drive Type | Electric | Electric | Electric |
| Horsepower | 20-40 | 80-120 | 250-400 |
| Voltage | 460/3/60 | 460/3/60 | 460/3/60 |
| Overfeed Protection | Included | Included | Included |
| Overload Protection | Included | Included | Included |
| Nominal Cutter Thickness | 1 ½" | 2" | 2" |
| Cutter Diameter | 9" | 13" | 21" |
| Cutter Material | 4140 | 4140 | 4140 |
| Shaft Diameter | 4 ⅝" | 5 ⅝" | 7 ⅞" |
| Cutting Chamber (WxL) | 30" x 36" | 38" x 38" | 67" x 67" |
| Overall Length (OAL) | 8' | 12' | 18' |
| Overall Width (OAW) | 40" | 54" | 85" |
| Overall Height (OAH) | 21" | 30" | 47" |
| Stand Height (BOF) | 36" | Per Application | Per Application |
| Machine Weight (LBS) | 4,500 | 14,000 | 45 – 55,000 |



Shredded Tires



Hard Drive Scraps



Wood Scraps



Shredded Plastic

APPLICATIONS

| Model | Particle Size | Media |
|--------|---------------|--|
| QS-30 | ½" – 2" | Medical Waste, Plastics, Metal Scrap, E-Scrap, Paper, Textiles, Wood |
| QS-100 | 1" – 4" | Medical Waste, Plastics, Metal Scrap, E-Scrap, Paper, Textiles, Wood |
| QS-250 | 1-1/2" – 6" | Medical Waste, Plastics, Metal Scrap, E-Scrap, Paper, Textiles, Wood |